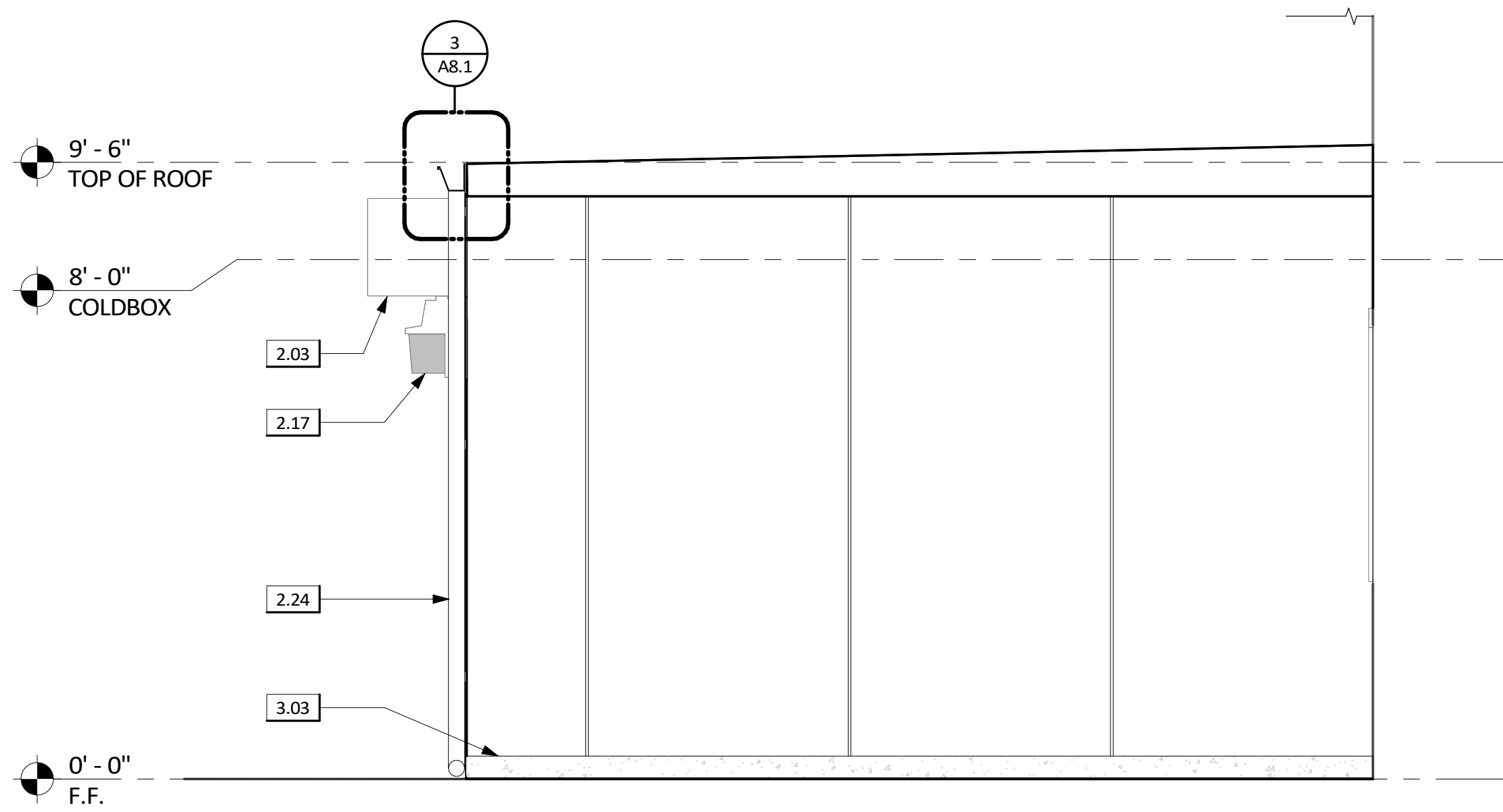
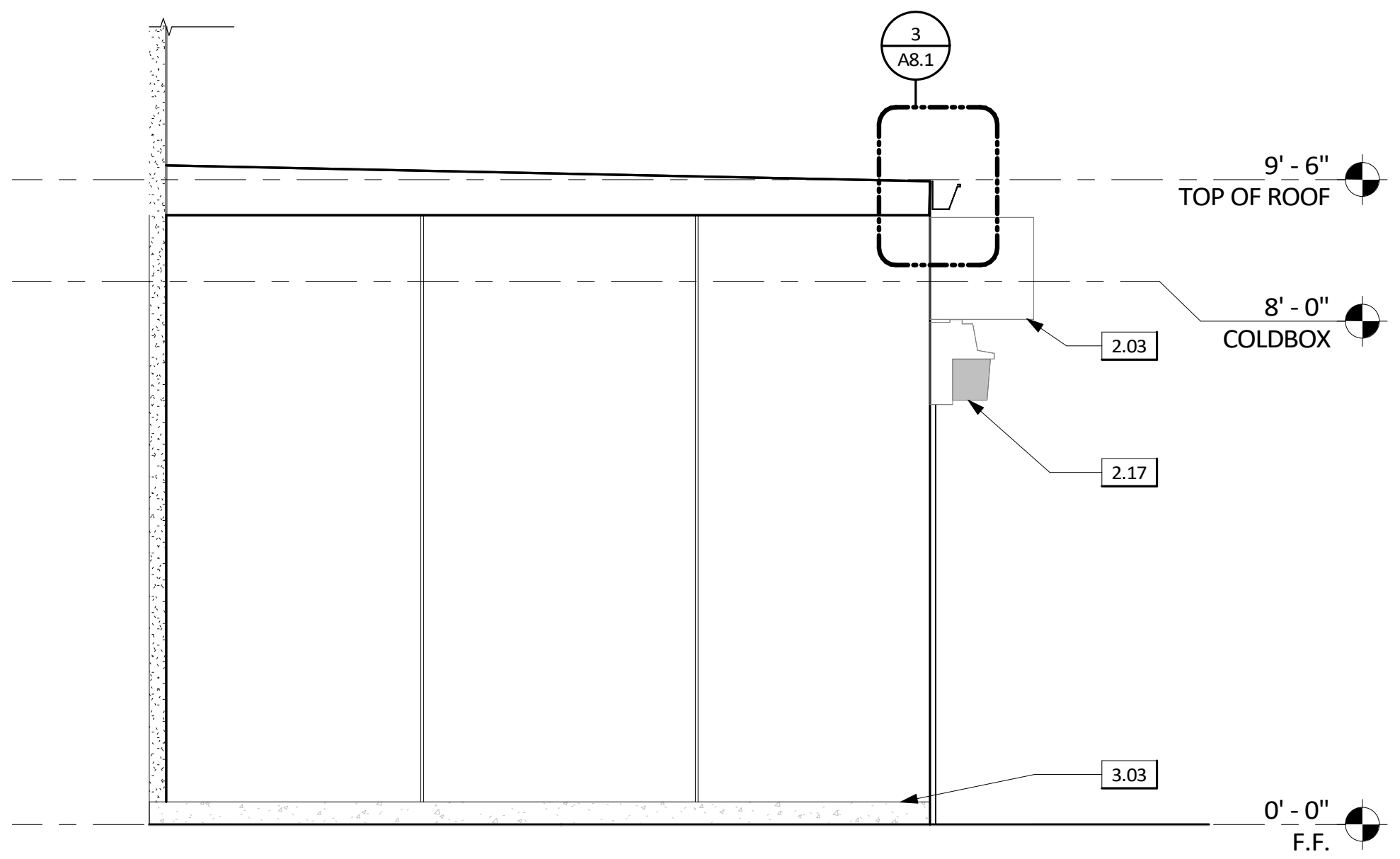


2 ELEVATION COLDBOX - EAST
1/2" = 1'-0"



3 ELEVATION COLDBOX - NORTH
1/2" = 1'-0"



1 ELEVATION COLDBOX - SOUTH
1/2" = 1'-0"

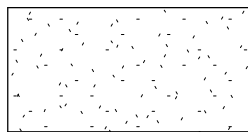
ELEVATION NOTES

1. CONTRACTOR TO FIELD VERIFY ALL DIMENSIONS.
2. ALL ITEMS REFERENCED ARE NEW U.O.N.
3. REFER TO GENERAL NOTES ON G1.1 - G1.3 FOR FURTHER INFORMATION & REQUIREMENTS.

KEYNOTES

- | | | |
|------|--|--|
| 2.02 | (E) HOLLOW METAL DOOR TO BE SALVAGED, PAINTED AND REINSTALLED - PROVIDE NEW DOOR FRAME | FOR DSA REVIEW ONLY - NOT FOR CONSTRUCTION |
| 2.03 | (E) AIR CURTAIN TO BE SALVAGED AND REINSTALLED - PER MECHANICAL | |
| 2.04 | (D) SURFACE MOUNTED EXTERIOR LIGHT FIXTURE TO BE SALVAGED AND REINSTALLED PER ELECTRICAL | |
| 2.16 | (E) ACCESSIBLE SIGNAGE TO BE SALVAGED AND RESINSTALLED - MOUNTING REQUIREMENTS PER DETAIL 12/AS1.2 | |
| 2.17 | (D) SURFACE MOUNTED EXTERIOR LIGHT FIXTURE - PER ELECTRICAL | |
| 2.24 | (E) DOWNSPOUT TO BE SALVAGED AND REINSTALLED | |
| 3.03 | CONCRETE CRUB - PER DETAIL 1/A8.1 & STRUCTURAL | |
| 7.01 | GUTTER PER DETAIL 3/A8.1 | |

LEGEND



PAINTED STUCCO TO MATCH ADJACENT STUCCO FINISH, COLOR, & TEXTURE



PREPARED FOR THE
BOARD OF EDUCATION

PREPARED BY THE
obr/ARCHITECTURE
2419 EL CAJON BLVD, SAN DIEGO, CA 92104

EXTERIOR ELEVATIONS
SAN DIEGO UNIFIED SCHOOL DISTRICT
KITCHEN MODIFICATIONS GROUP 6
BELL MIDDLE SCHOOL
620 BRIARWOOD RD,
SAN DIEGO, CA 92139
DSA SUBMITTAL SET

PROJECT NO. SDUF-006A	
R.S.	A.P.
FILE NAME	
DATE 03/21/2025	
REVISIONS	SHEET NO.
	A4.1